

The Royal Canadian College of Organists
Le Collège royal canadien des organistes

Fellowship
Written Examination – Paper II
2019

You will have three hours to complete the questions asked. The value of each question is indicated in parentheses; the total mark is 100. You are strongly urged to budget your time carefully.

You should have two copies of the exam paper. One is for your rough work, and you may take it with you when you are done. The good copy should be inserted into the enclosed envelope and given to the invigilator. Please ensure that your candidate number appears on the top right hand corner of every page, and that there are no other markings which might identify you to the examiners.

Vous avez trois heures pour compléter les questions ci-jointes. La valeur de chaque question est indiquée entre parenthèses; la somme totale est de 100 points. Il est recommandé que vous planifiez votre temps soigneusement.

Vous avez reçu deux exemplaires de l'examen. L'un peut servir de brouillon, et vous pouvez le garder à la fin. La copie au propre est à insérer dans l'enveloppe et à remettre au/à la surveillant(e). Veuillez vous assurer que votre numéro de candidat paraisse au coin droit en haut de chaque feuille, et qu'il n'y ait pas d'autre indication de votre identité.

4: Write a short chorale prelude for organ on the theme given at **A** below. You may continue in the style of the opening given at **B**, or write your own prelude on the given melody (30 marks)

4. Écrivez un court prélude de choral pour orgue sur le thème donné à **A** ci-dessous. Vous pouvez continuer dans le style du début indiqué à **B**, ou composez votre propre prélude sur la mélodie à **A**. (30 points)

A. Theme

A. Thème

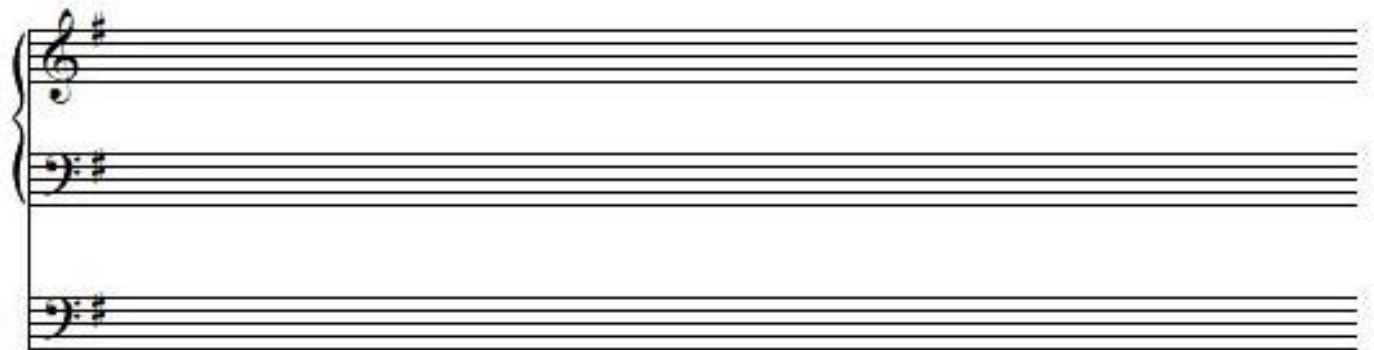
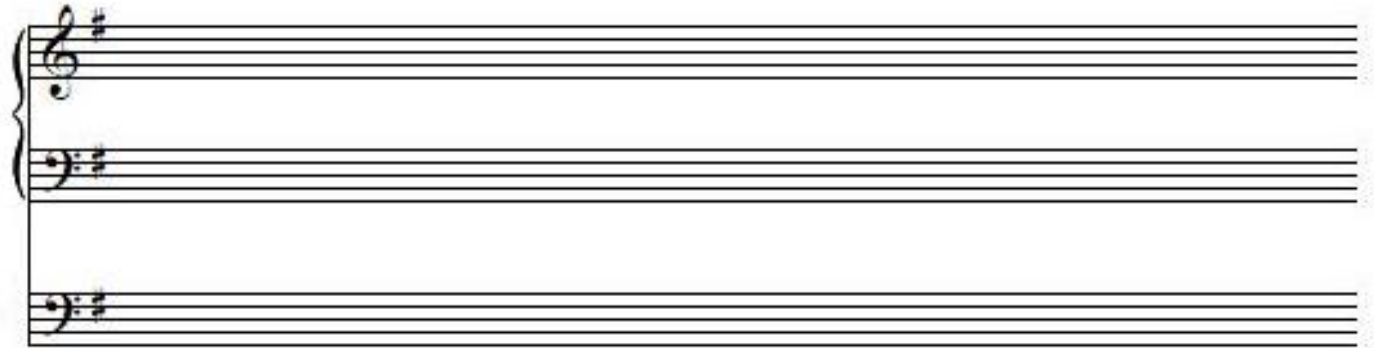
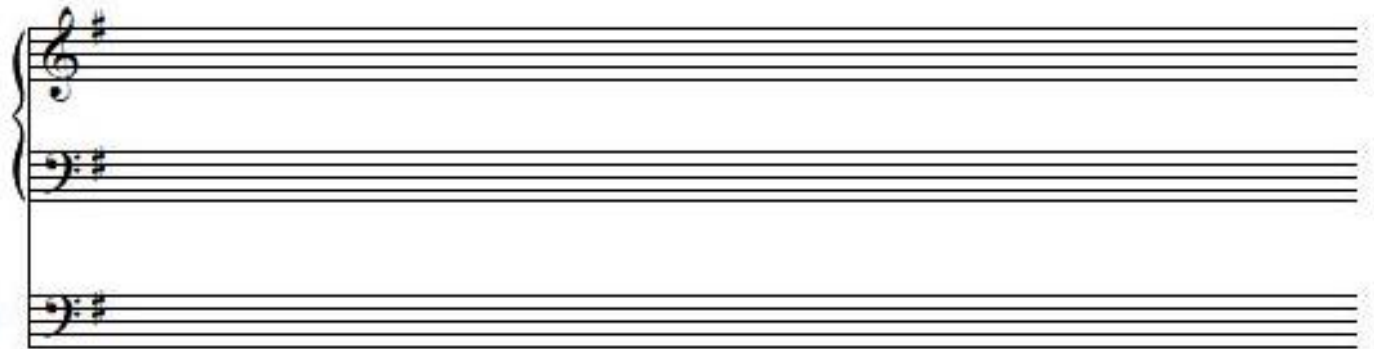
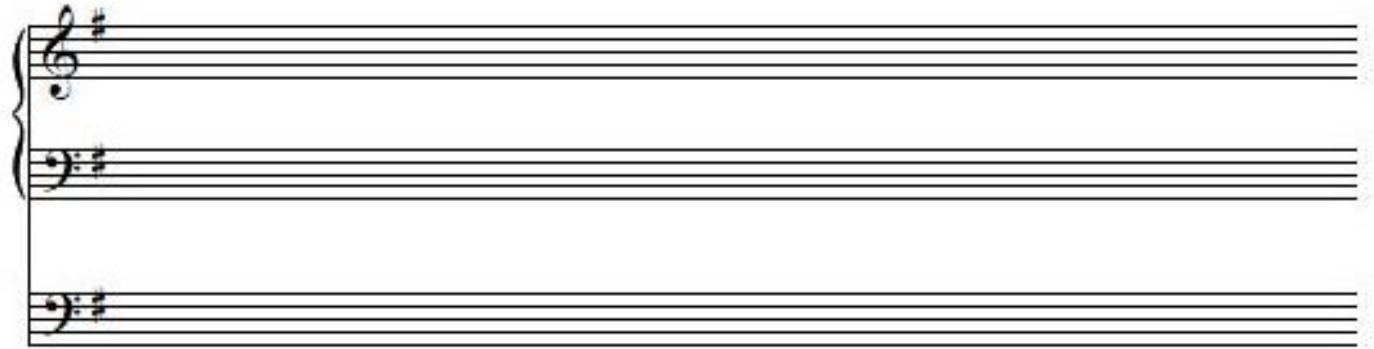
Two staves of musical notation in G major and 4/4 time. The first staff contains a melody of quarter notes: G4, A4, B4, C5, B4, A4, G4, F4, E4, D4, C4, B3, A3, G3. The second staff contains a bass line of quarter notes: G3, F3, E3, D3, C3, B2, A2, G2, F2, E2, D2, C2, B1, A1, G1. Both staves have a fermata over the final note.

B. Chorale Prelude

Three staves of musical notation in G major and 4/4 time. The tempo is marked as quarter note = 66. The top staff has a melody of eighth notes: G4, A4, B4, C5, B4, A4, G4, F4, E4, D4, C4, B3, A3, G3. The middle staff has a bass line of eighth notes: G3, F3, E3, D3, C3, B2, A2, G2, F2, E2, D2, C2, B1, A1, G1. The bottom staff is empty.

Three empty musical staves in G major and 4/4 time, provided for the student to write their own chorale prelude.

(Question 4 continued)



5. Complete the following short composition in modern style for unaccompanied voices (SATB); **OR**, using the same text, but not the given opening, compose a short piece in modern style for unaccompanied voices (SATB). Marks will be given for originality and creativity; simple block harmony is not sufficient. (35 marks)

5. Complétez la courte composition suivante en style moderne pour voix sans accompagnement (SATB) **OU**, en utilisant le même texte, mais pas le début indiqué, composez un court morceau en style moderne pour voix sans accompagnement (SATB). Vous recevrez des points pour votre originalité et votre créativité; des accords simples ne suffiront pas. (35 points)

Text: "Eternal light, shine in my heart; Eternal hope, lift up my eyes; Eternal power, be my support; Eternal wisdom, make me wise." (Christopher Idle)

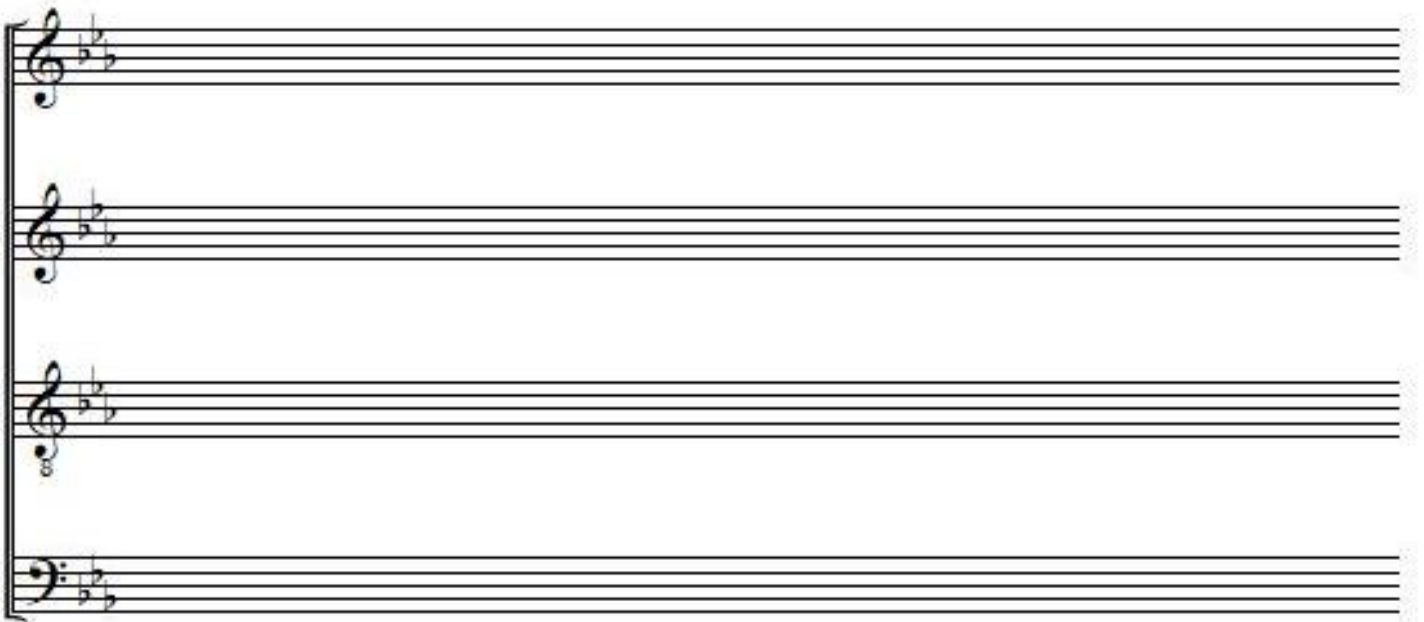
E-ter-nal light, shine in my heart, E-ter-nal hope, lift up my
 E-ter-nal light, Ah
 E-ter-nal light, Ah
 E-ter-nal light, Ah

eyes;
 E-ter-nal hope, lift up my eyes, lift up my eyes;

(Question 5 continued)



A system of four musical staves. The top three staves are in treble clef, and the bottom staff is in bass clef. Each staff begins with a key signature of two flats (B-flat and E-flat) and a common time signature (C). The staves are otherwise empty.



A second system of four musical staves, identical in layout to the first system. It consists of three treble clef staves and one bass clef staff, all starting with a key signature of two flats and a common time signature. The staves are empty.

6. Write an essay of approximately 500 words on ONE of the following topics concerning the music of Max Reger and his German contemporaries, citing particular examples. Please indicate clearly your choice of topic. (35 marks)

Écrivez un essai d'à peu près 500 mots sur l'UN des sujets suivants concernant la musique de Max Reger et ses contemporains allemands. Citez des exemples spécifiques qui illustrent votre réponse. Indiquez clairement votre choix de question. (35 points)

1. Discuss the influence of the Lutheran chorale on Reger's organ music. Cite particular examples, and mention two other composers of his generation whose work shows similar influences.

1. Discutez l'influence du choral luthérien sur la musique pour orgue de Reger. Citez des exemples spécifiques et mentionnez deux autres compositeurs de la génération de Reger dont l'œuvre montre des influences semblables..

OR/OU

2. Discuss the points raised in the following quotation: "His works, deservedly neglected, are overly long and even turgid; however, he did contribute to the break-down of tonality, with his jarring chromaticism and 'shocking' modulations".

2. Discutez les points soulevés dans la citation suivante: «Ses œuvres, négligées comme elles le méritent, sont trop longues et même ampoulées; il a néanmoins contribué à la destruction de la tonalité, avec ses chromatismes discordants et ses modulations choquantes.»

OR/OU

3. What other composers after 1800 influenced Reger's composition? Cite musical examples.

3. Quels autres compositeurs après 1800 ont influencé la composition de Reger? Citez des exemples musicaux.